

# **Raising Awareness and Educating Personnel at UCLA about DURC**

**Jennifer A. Perkins, MA, CPIA**

Director, Research Safety & Animal Welfare Administration

Institutional Contact for Dual Use Research

University of California, Los Angeles (UCLA)

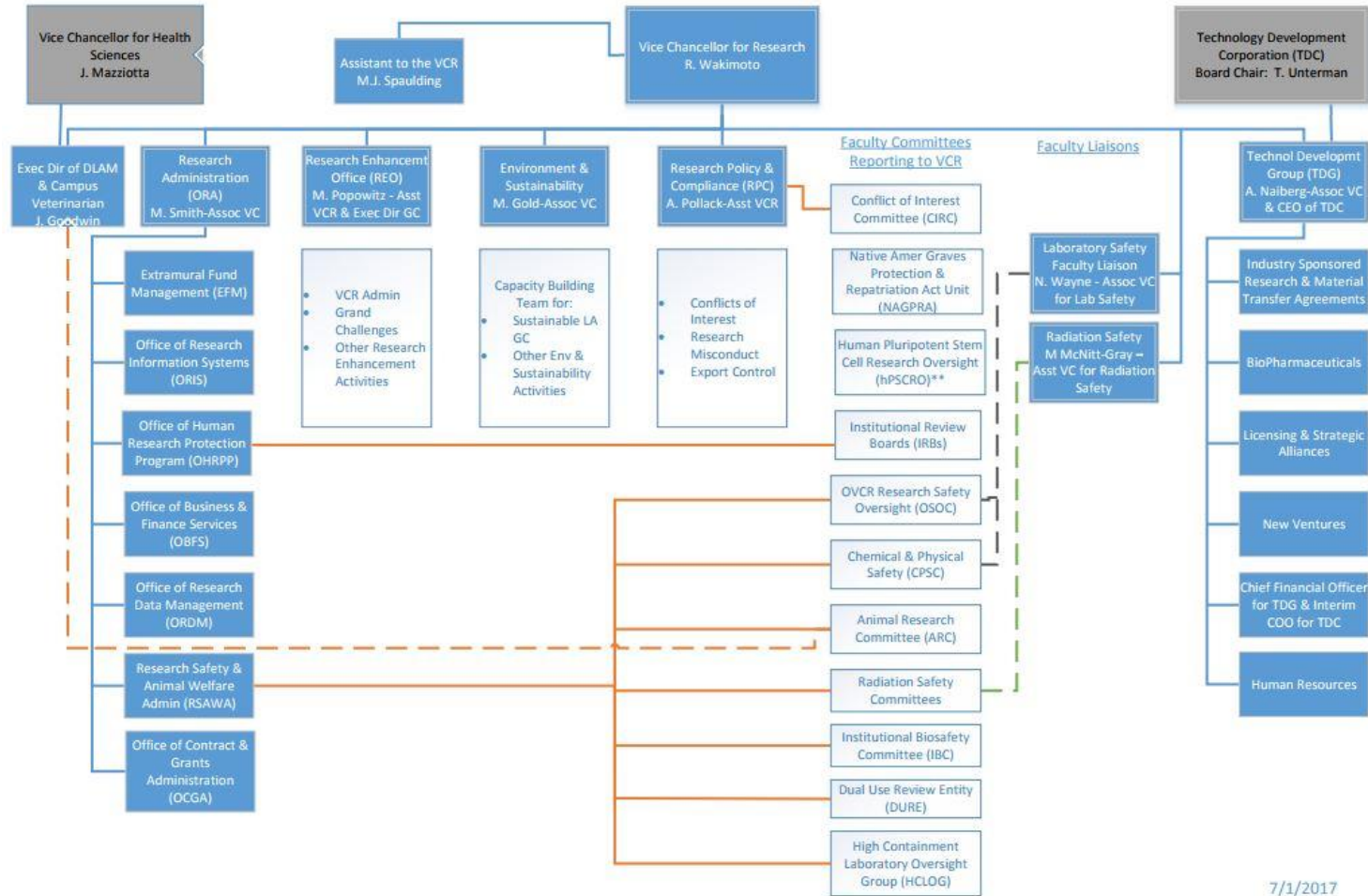
# Institutional Background

- UCLA ranks among the world's top research universities, with >\$1B/yr in external research grants and contracts
- Researchers supported by federal agencies (NIH, NSF, NASA, etc), as well as many state and private organizations

## LATEST STATISTICS

- Awarded Dollars
  - \$ **238,870,140** FY 2017-2018
  - \$ **1,060,140,489** FY 2016-2017
  - \$ **1,049,075,841** FY 2015-2016
  - \$ **1,033,159,101** FY 2014-2015
- Requested Dollars
  - \$ **558,253,446** FY 2017-2018
  - \$ **4,036,488,422** FY 2016-2017
  - \$ **4,027,433,059** FY 2015-2016
  - \$ **3,815,359,119** FY 2014-2015
- IRB and ARC Approval Counts
  - 5046** IRB approvals FY 2016-2017
  - 703** ARC approvals FY 2016-2017

## UCLA Office of the Vice Chancellor for Research



# UCLA Institutional Review Entity

- UCLA Dual Use Review Entity (DURE) established in 2015
  - Stand-alone committee, separate from IBC
  - Faculty and staff membership
  - ICDUR – why me?
- UCOP DURC Policy – approved September 2015
- UCLA Administrative Policy 995 – Dual Use Research of Concern – approved January 2016
- DURE Charter – finalized October 2016

# UCLA DURC Program

- Very small: 3 PIs, 6 agents\*
- Scope of DURE review limited to 15 agents/toxins listed in the USG Policies
- Identification of potential DURC
  - IBC review – dedicated page in BUA
  - IACUC, IRB review – database search
- DURE website
- Consult with ICDUR

\*two used off-site only

# Training Requirements

- UCOP DURC Policy

<http://policy.ucop.edu/doc/2500637/DURC>

- Responsibility of Institution, PI, ICDUR
- IRE responsibility not defined
- Training frequency not defined

- UCLA DURC Policy and DURE Charter

<http://www.adminpolicies.ucla.edu/pdf/995.pdf>

<http://ora.research.ucla.edu/RSAWA/DURE>

- Focus on responsibility of PI, DURE

# Training Requirements: UCLA

- Required for personnel working with any of the 15 agents/toxins
- Online CITI DURC course every 3 years
  - frequency consistent with IBC review
- If DURC, training/refresher frequency will be defined in the mitigation plan
- Exceptions (e.g., former NSABB member)
- DURE members: annual, in-person training

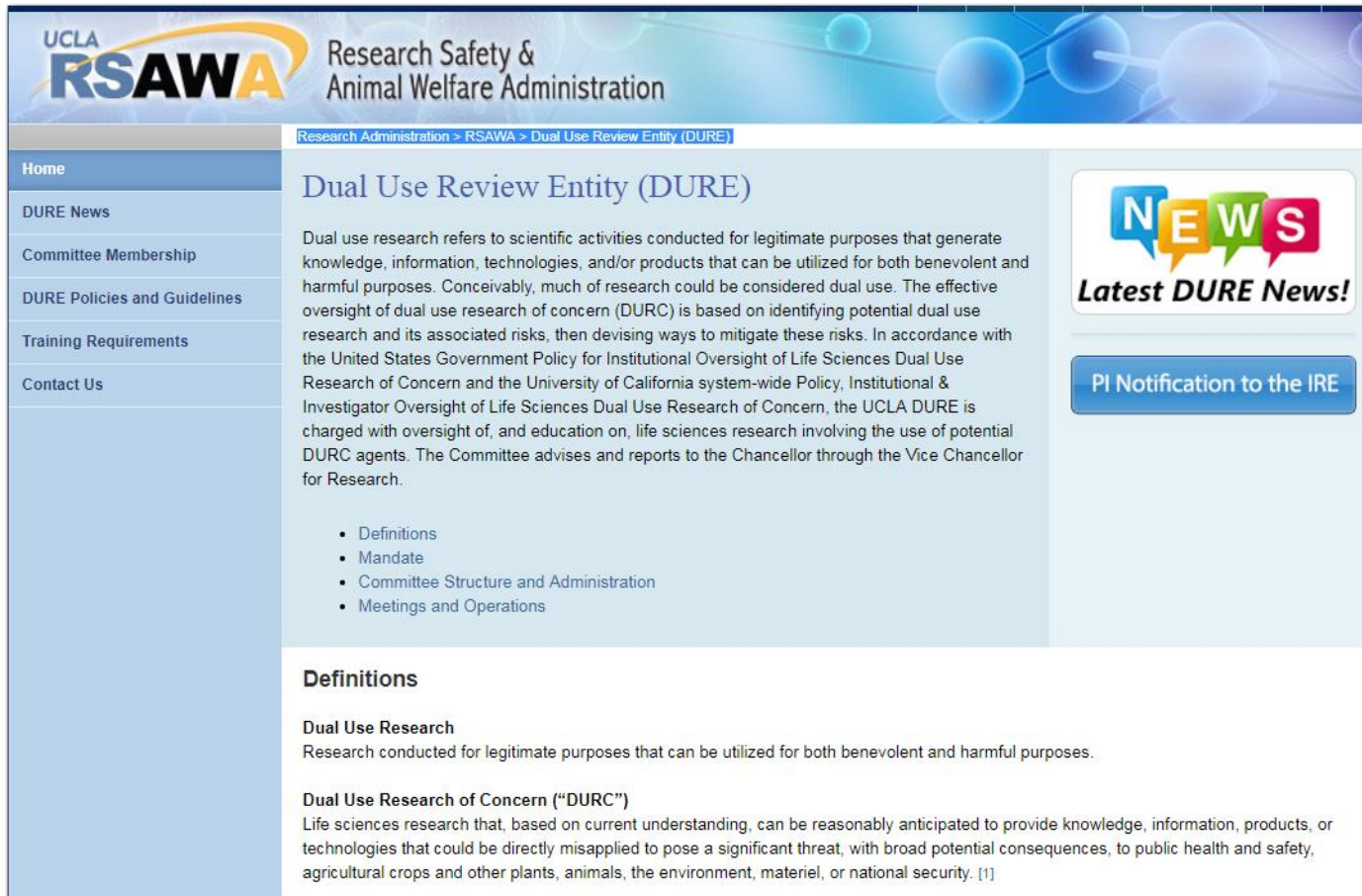
# Integration of Training

- DURC training is tangential to IBC program
  - IBC requires registration of any infectious agent or Select Toxin, which allows for quick identification of personnel for DURC training efforts
- UCLA high containment operations have extensive security training and personnel suitability program
  - Additional security and ethical issues associated with DURC are not currently covered

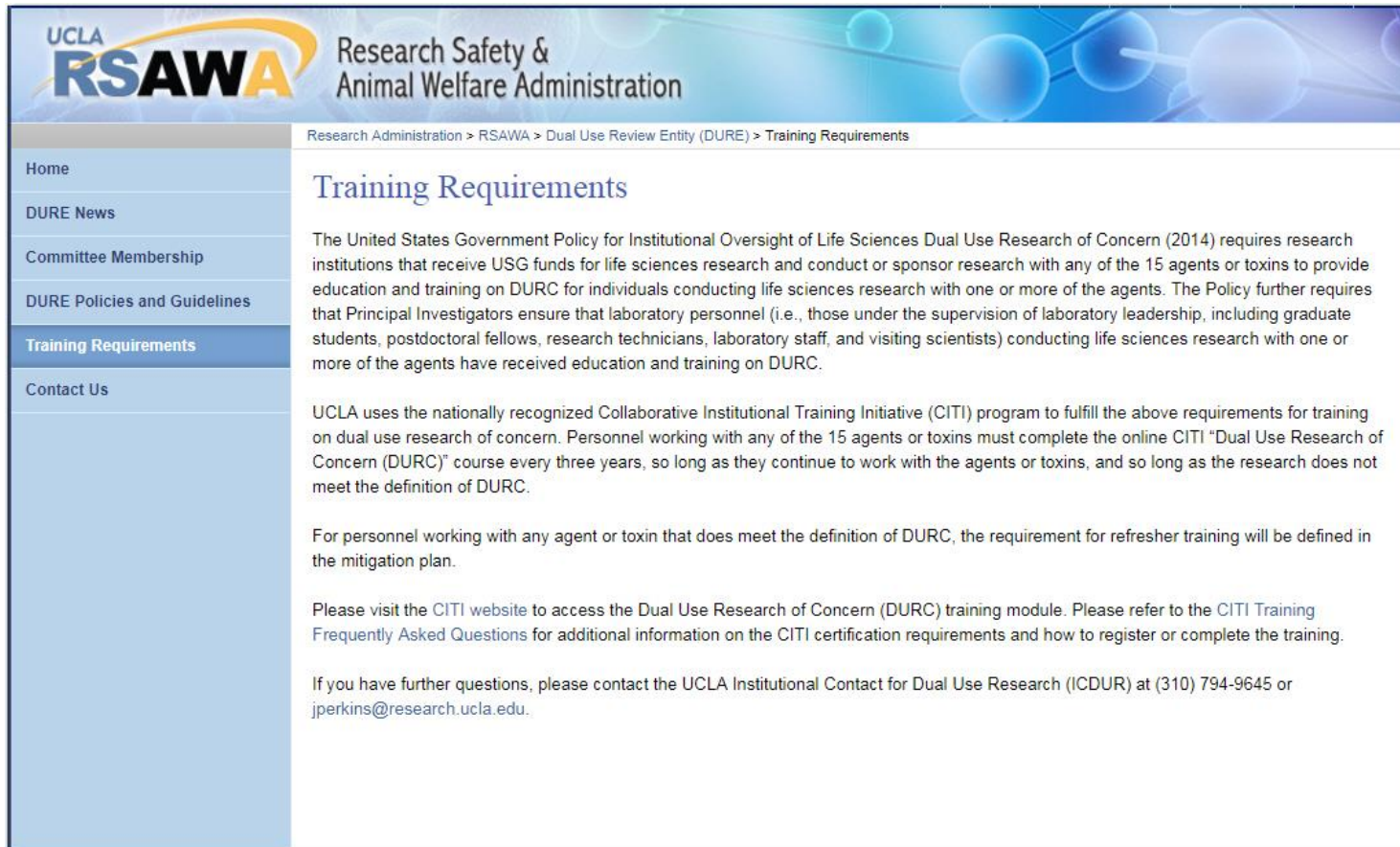


# Education and Awareness at UCLA

# DURE Website

A screenshot of the UCLA DURE website. The header includes the UCLA RSAWA logo and the text "Research Safety & Animal Welfare Administration". A breadcrumb trail reads "Research Administration > RSAWA > Dual Use Review Entity (DURE)". A left sidebar contains navigation links: Home, DURE News, Committee Membership, DURE Policies and Guidelines, Training Requirements, and Contact Us. The main content area is titled "Dual Use Review Entity (DURE)" and contains a detailed paragraph about dual use research, a list of links (Definitions, Mandate, Committee Structure and Administration, Meetings and Operations), and a "Definitions" section with sub-sections for "Dual Use Research" and "Dual Use Research of Concern ('DURC')". On the right, there is a "Latest DURE News!" graphic and a "PI Notification to the IRE" button.

# DURE Website

A screenshot of the UCLA RSAWA website's "Training Requirements" page. The page has a blue header with the RSAWA logo and the text "Research Safety & Animal Welfare Administration". Below the header is a breadcrumb trail: "Research Administration > RSAWA > Dual Use Review Entity (DURE) > Training Requirements". A left-hand navigation menu lists: "Home", "DURE News", "Committee Membership", "DURE Policies and Guidelines", "Training Requirements" (highlighted in blue), and "Contact Us". The main content area is titled "Training Requirements" and contains three paragraphs of text. The first paragraph discusses the 2014 USG policy on DURC. The second paragraph explains that UCLA uses the CITI program for training. The third paragraph details the refresher training requirement. The final paragraph provides contact information for the UCLA Institutional Contact for Dual Use Research (ICDUR).

# IBC Listserv Announcement




Mon 8/14/2017 12:08 PM

Perkins, Jennifer <JPerkins@research.ucla.edu>

[IBCInvestigators] New Dual Use Research of Concern (DURC) website

To ibcinvestigators@lists.ucla.edu

 You forwarded this message on 8/15/2017 11:28 AM.



Dear Colleagues:

I am pleased to inform you that we have launched a new website for Dual Use Research of Concern (DURC): <http://ora.research.ucla.edu/rsawa/dure>.

Dual use research refers to scientific activities conducted for legitimate purposes that generate knowledge, information, technologies, and/or products that can be utilized for both benevolent and harmful purposes. Conceivably, much of research could be considered dual use. The effective oversight of dual use research of concern (DURC) is based on identifying potential dual use research and its associated risks, then devising ways to mitigate these risks. The US Government has identified [15 agents and toxins](#) that, if used in research, require evaluation for dual-use potential.

The DURC website includes information about the Dual Use Review Entity (i.e., the faculty led committee), policies and guidelines, and training requirements.

Please visit the new website to learn more about DURC. Feel free to contact me if you have any questions.

Regards,  
Jennifer

---

**Jennifer Perkins, MA, CPIA**  
Director – Research Safety & Animal Welfare Administration (RSAWA)  
Institutional Contact for Dual Use Research (ICDUR)  
310-794-9645

# IBC Protocol (BUA)



**SafetyNet**

UCLA Research Administration  
IBC Online System

View: SafetyNet Submission - BUA-2016-057-001

<< Back

Exit | Hide/Show Errors | Print... | Jump To:

- Dual Use Research of Concern ▾

Continue >>

## Dual Use Research of Concern

The National Science Advisory Board for Biosecurity (NSABB) has defined Dual Use Research of Concern (DURC) as: "research that, based on current understanding, can be reasonably anticipated to provide knowledge, products, or technologies that could be directly misapplied by others to pose a threat to public health and safety, agricultural crops and other plants, animals, the environment or material".

DURC Companion Guide: <http://www.phe.gov/s3/dualuse/Documents/durc-companion-guide.pdf>

Does your research have dual use potential? <http://osp.od.nih.gov/sites/default/files/resources/EducationalBrochureDualUseResearch.pdf>

### 1. \* Does your research involve any of the agents or toxins listed below?

- Avian influenza virus (highly pathogenic)
- Bacillus anthracis
- Botulinum neurotoxin
- Burkholderia mallei
- Burkholderia pseudomallei
- Ebola virus
- Foot-and-mouth disease virus
- Francisella tularensis
- Marburg virus
- Reconstructed 1918 Influenza virus
- Rinderpest virus
- Toxin-producing strains of Clostridium botulinum
- Variola major virus
- Variola minor virus
- Yersinia pestis
- My research does not involve any of these agents

# RPC Website

A screenshot of the Research Policy & Compliance (RPC) website. The header includes the UCLA RPC logo and the text "RESEARCH POLICY & COMPLIANCE". A breadcrumb trail reads "Research Administration > Research Policy & Compliance > Additional Research Policies & Guidance Documents". A left-hand navigation menu lists various topics, with "Additional Research Policies & Guidance Documents" selected. The main content area is titled "Additional Research Policies & Guidance Documents" and contains a bulleted list of policy areas. Below this, a sub-section titled "Dual Use Research of Concern (DURC)" contains another bulleted list of related documents and videos.

Research Administration > Research Policy & Compliance > Additional Research Policies & Guidance Documents

## Additional Research Policies & Guidance Documents

- Budgeting and Costing
- Clinical Studies
- Data Access and Management
- Gifts
- Guidance for Principal Investigators
- UCLA Research Guidance Policies and Procedures
- Tobacco Funding/Research
- UCLA-RAND Memoranda of Understanding
- UCLA-Caltech Memorandum of Understanding
- UCLA-VA Memorandum of Understanding
- Dual Use Research of Concern (DURC)

### Dual Use Research of Concern (DURC)

- NIH Policy on Mitigating Risks of Life Sciences Dual Use Research of Concern (NIH Notice NOT-OD-13-107)
- Notice of Clarification to NIH Policy on Mitigating Risks of Life Sciences Dual Use Research of Concern (NIH Notice NOT-OD-13-110)
- Dual Use Research: A Dialogue (NIH Video)
- NIH DURC Policy

**Thank you**